




Advanced Users Workshop

PREPARING DIGITAL IMAGES FOR PUBLICATION



UCLA Molecular Biology Interdepartmental Graduate Program
May 14, 2008

Michael Hepp
Technology Strategist
The Sheridan Group Journals



Topics

Working in Photoshop: Follow-up from Session 1

Color Management Concepts

Getting Good Images from Microsoft Office

Image Integrity



Photoshop basics

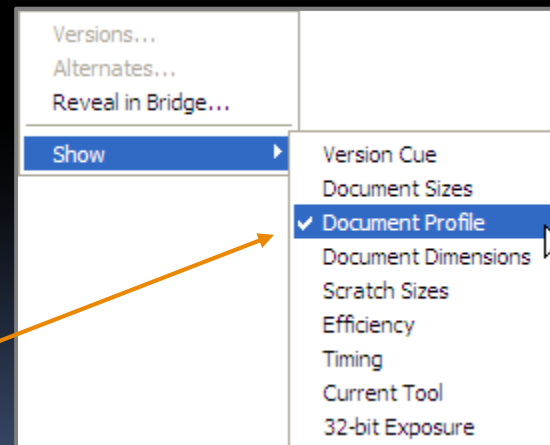
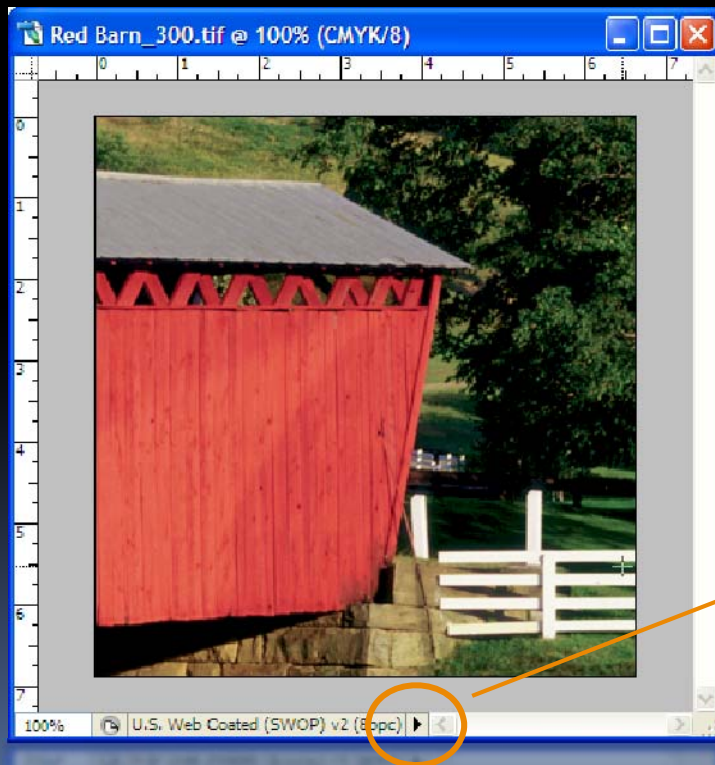
- Resolution
- Resampling
- Effective resolution
- Saving to formats
- Compression
- Color Management

Color management concepts

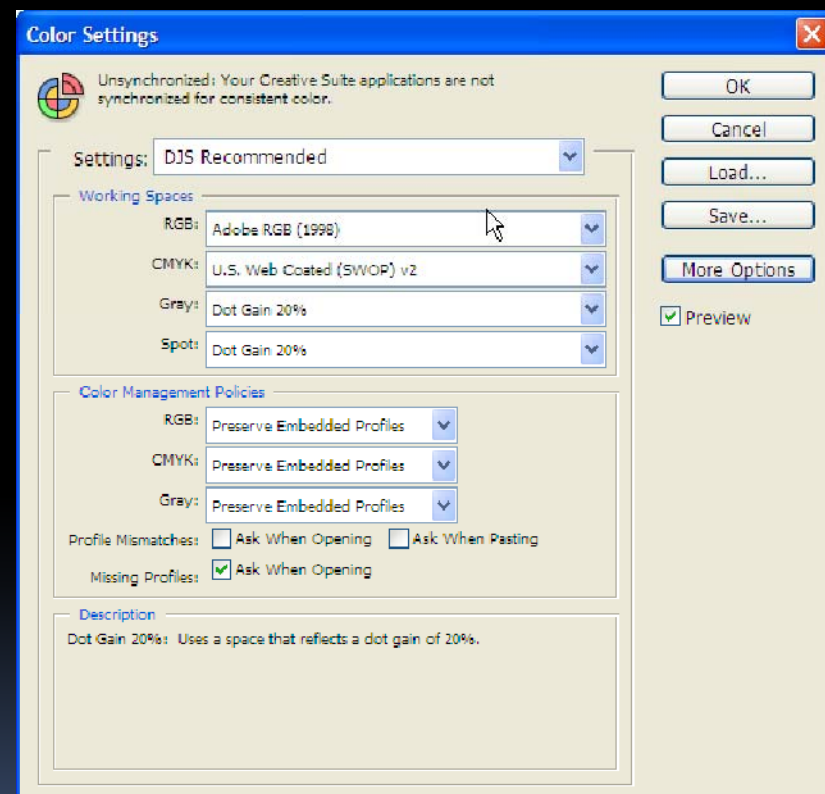
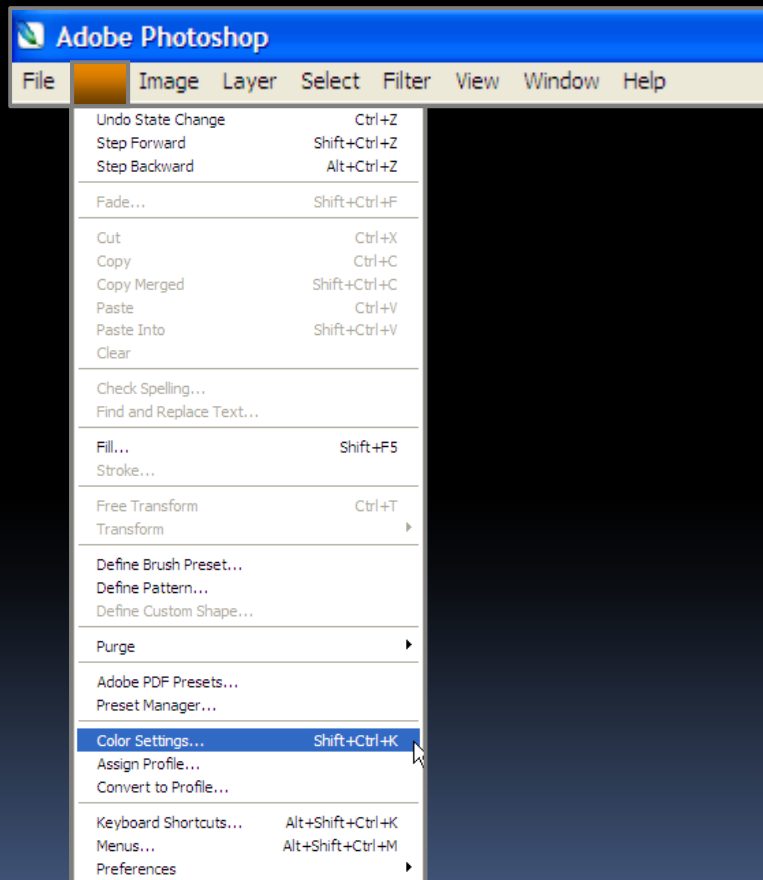
- Profiles
- Color Settings
- Working Spaces
- Color Management Policies
- Managing Files
- Assign to Profile vs. Convert to Profile*

Profiles

- Display profiles by default by selecting “Document Profile” in the picture menu

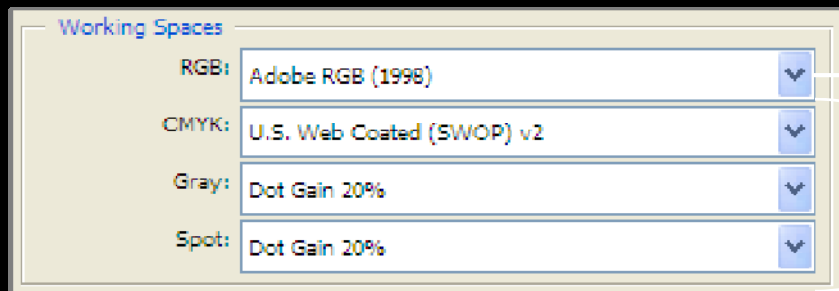


Color settings



Working spaces

Default working spaces will be used whenever an image with NO attached profile is opened.



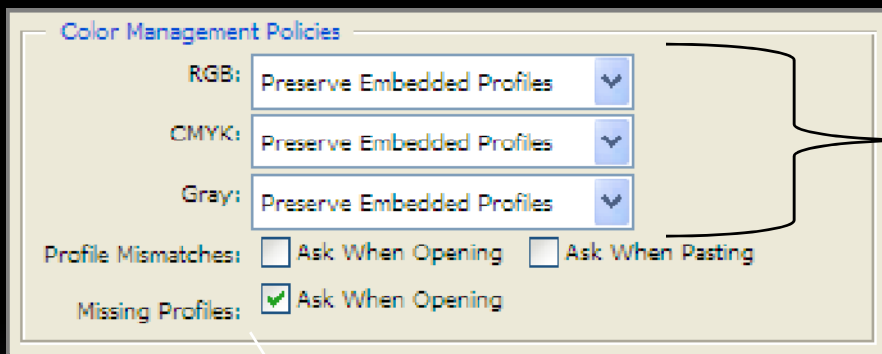
Simulates selected RGB color space

Simulates printing press conditions when displaying images of these modes on screen*

* Accuracy of simulation on screen is dependent upon calibration of the monitor

Color management policies

Default working spaces will be used whenever a image with no attached or tagged profile is opened.

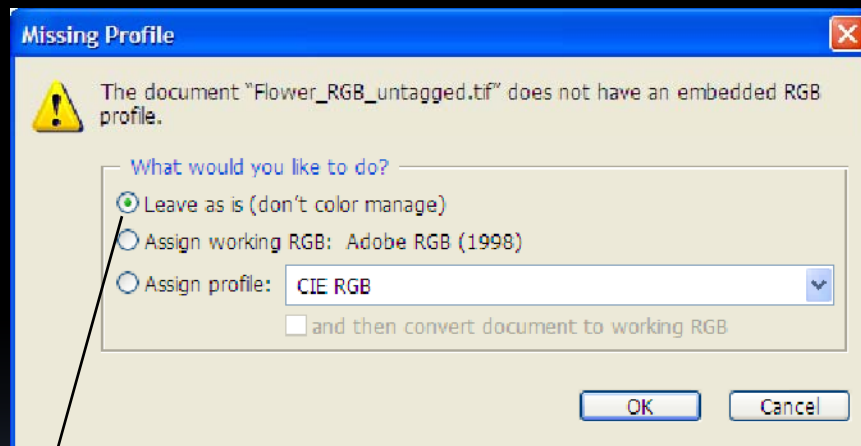


Ensures that embedded profiles are honored upon opening an image and used to display the image on screen – overrides the default working spaces

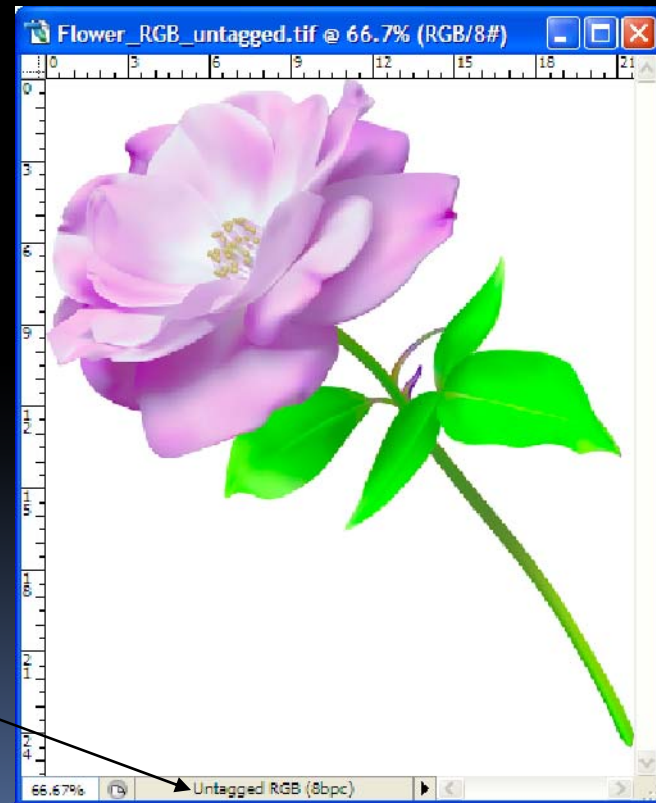
Notifies the user upon opening a file if the image does not have an ICC profile attached. Allows user to manage the file appropriately.

Missing profile

Based on the color management policy settings, upon opening an untagged file the user will be prompted for direction.

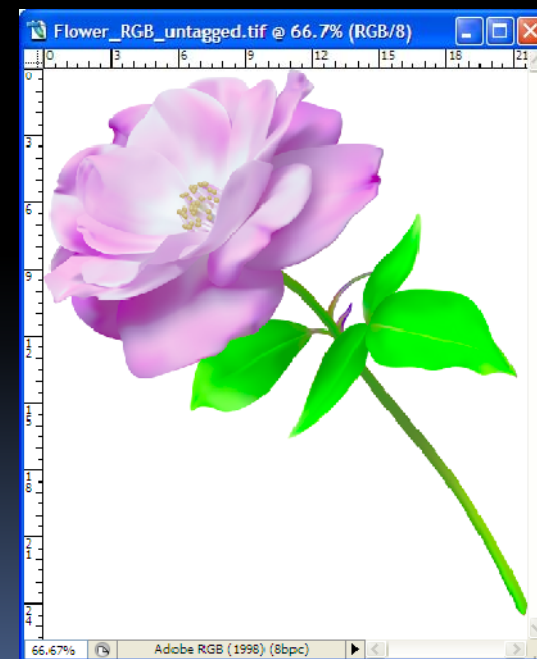
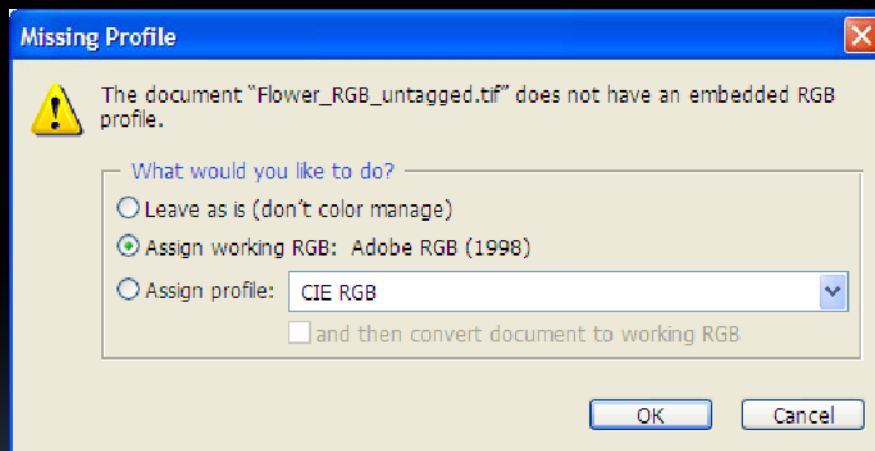


Actually uses default working space but will identify image as "Untagged"



Missing profile cont...

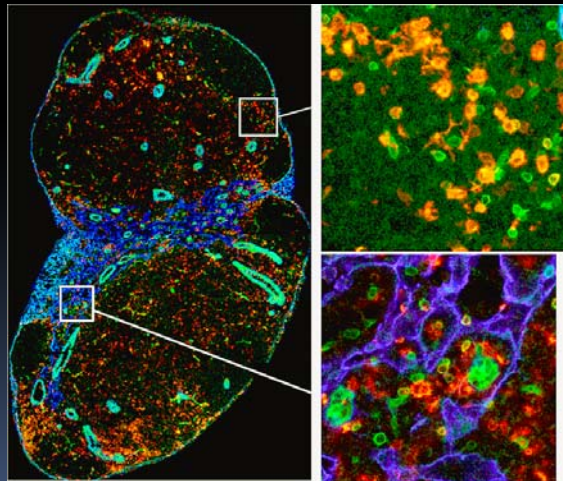
Based on the color management policy settings, upon opening an untagged file the user will be prompted for direction. Recommended direction is to assign to the working space only if you can't get a tagged version of the file!



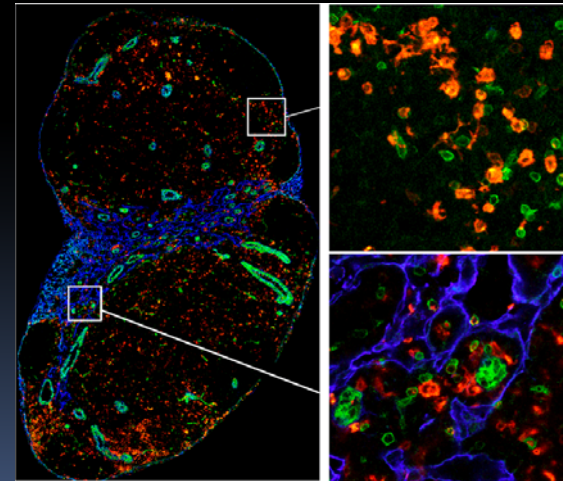
Assign to profile

Assign to profile maps the colors of the source file into the colors of the destination space with no compensation for differences – result is potential for color shift.

Profiles are important for accurate color representation!



Original Image with ICC Profile

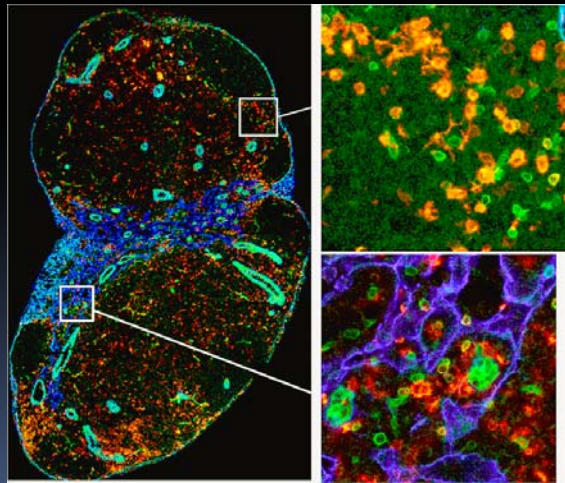


Untagged file opened with Adobe profile

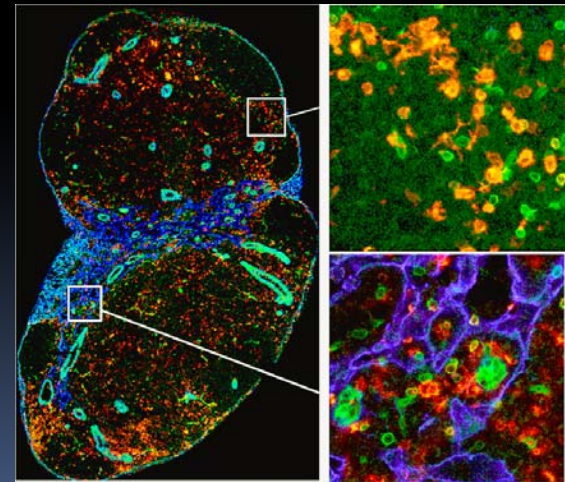
Convert to profile

Convert to profile maps the colors of the source file into the colors of the destination space AND compensates for the differences – result is NO color shift.

Extremely important when building multi-panel figures from a variety of figures!
Each figure should be using the same profile when the multi-panel figure is built.



Original Image with ICC Profile



Untagged file opened with Adobe profile

Microsoft Office

- Most journals DO NOT accept files in MS Word, PowerPoint, or Excel
- Printing to PDF is the best method for handling non-standard formats*

<http://dx.sheridan.com/guidelines/main.html>

How to create a Prepress Quality PDF with Microsoft Office Applications

* Assumes author has started with high resolution images embedded in application file

Tips for Microsoft Office

- Artwork placed within any MS Office application should be of acceptable minimum resolution
 - 300 ppi for halftones
 - 1000 -1200 ppi for line art
 - 600-900 ppi for combinations

Tips for Microsoft Office

- When inserting pictures, be sure to select “insert” and not “insert link”
- Insert link does not properly embed the hi-res image into the MS Office file
- Use standard fonts and embed when possible
- Don't save a TIFF or JPEG from PowerPoint!



Image Integrity

Integrity in Science



Image Integrity

- Detecting image manipulation through the use of image editing software and investigative techniques

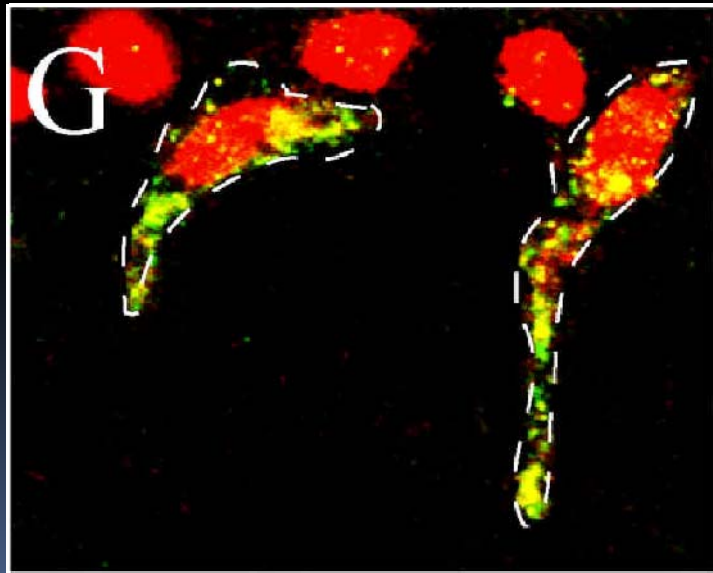


Image Integrity

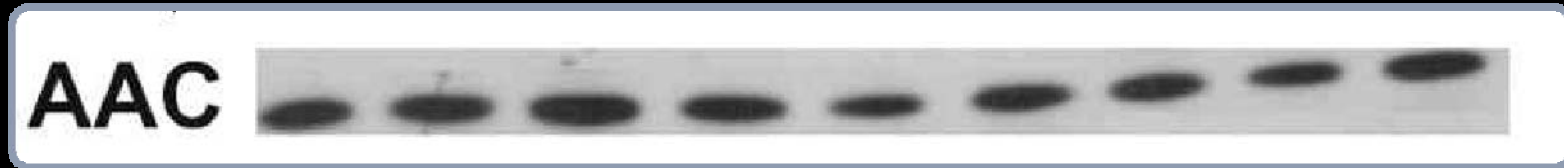


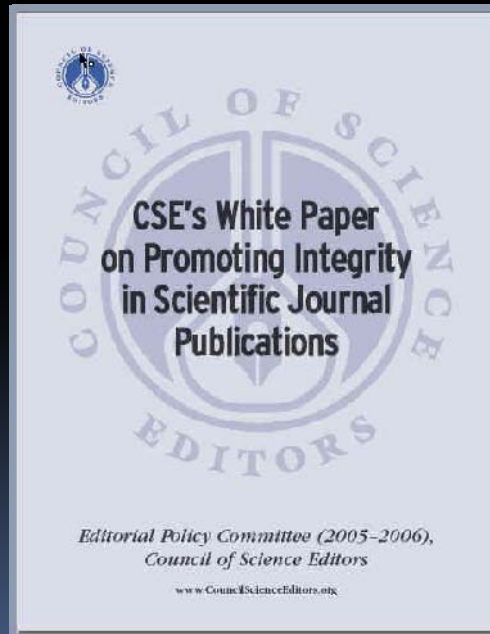
Image Integrity



Guidelines

- Promoting Integrity in Scientific Journal Publications

http://www.councilscienceeditors.org/editorial_policies/whitepaper/pressrelease.cfm



Guidelines

- No specific feature within an image may be enhanced, obscured, moved, removed, or introduced
- Adjustments of brightness, contrast, or color balance are acceptable if they are applied to the whole image and as long as they do not obscure, eliminate, or misrepresent any information present in the original

Guidelines

- The grouping of images from different parts of the same gel, or from different gels, fields, or exposures must be made explicit by the arrangement of the figure (eg, dividing lines) and in the text of the figure legend.
- If the original data cannot be produced by an author when asked to provide it, the acceptance of the manuscript may be revoked

More information available

<http://dx.sheridan.com/>

The screenshot shows the DigitalExpert website with a navigation menu at the top containing links for Home, About, Guidelines, Resources & Links, Tech Talk, FAQ's, and News. A search bar is located on the right side of the menu. The main content area features a large banner with the DigitalExpert logo and a background of binary code. To the right of the banner is a text block starting with "The Sheridan Group is proud to provide the DigitalExpert website" and describing the tool's purpose. Below the banner, there are three columns of content: a "Try Online" section for file checking, a "Quick Find" section with a dropdown menu, and a "Recent News" section with three news items, each with a "Read More" link. The footer contains copyright information for 2005 and a link to Terms of Use.

Home About Guidelines Resources & Links Tech Talk FAQ's News Search GO→

Digital Expert™

→ **The Sheridan Group is proud to provide the DigitalExpert website**

as a tool for your success, Digital Expert is a combination of tools and information that gives everyone the ability to prepare and submit quality digital materials for print production. This website is intended to be a resource and springboard for new ideas in the digital submission process.

→ **Try Online**, our file checking system. It's easy as 1, 2, 3.

Check your files... You'll know if there are any problems before you print and how to fix the problems.

[Learn More >>](#)

THE SHERIDAN GROUP

→ PRINTING JOURNALS, MAGAZINES, CATALOGS AND BOOKS

→ **Quick Find**
Information at your fingertips.

– Link to... –

→ **Recent News** | Last Updated 3/25/05

- The Sheridan Group announces the release of the new DigitalExpert website. [Read More >>](#)
- Aries Systems announces the integration of DigitalExpert with Editorial Manager. [Read More >>](#)
- ScholarOne announces the integration of DigitalExpert with Manuscript Central. [Read More >>](#)

Copyright 2005 | [Terms of Use](#)

Presentation available at:

Site: [ftp.dartmouthjournals.com](ftp://ftp.dartmouthjournals.com)

Username: digexp

Password: 61gexp